



# **SUPPLEMENTARY MANUAL**

for GPXT + GPX-U01

Using a T30 screwdriver, locate and remove the screw on the right side of the headlight assembly.  
Shown below in the circle.



On the Left side remove the two remaining screws, one above and one below the turn indicator.

Shown below in the circles.



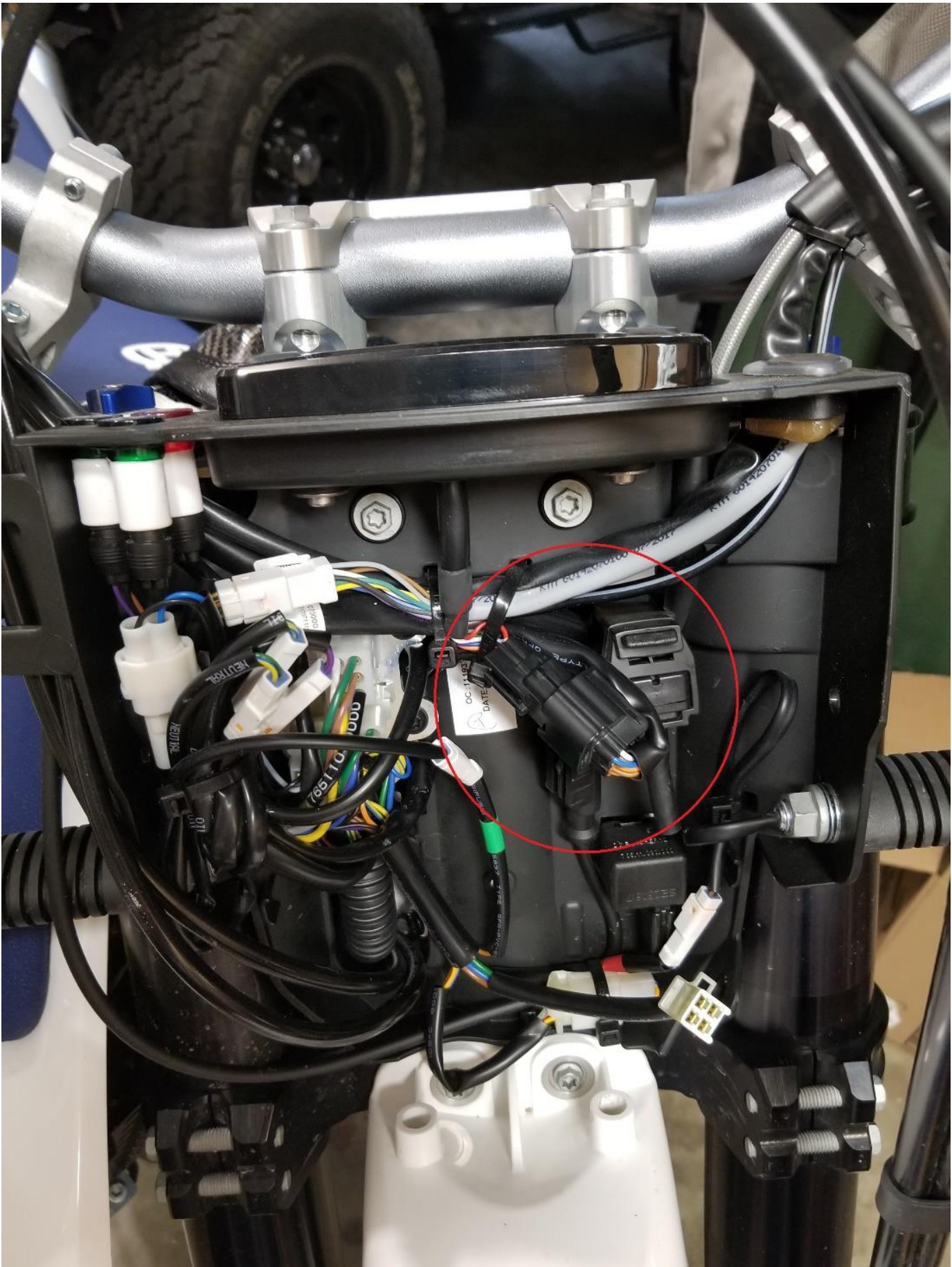


Pull the headlight assembly away from the motorcycle and disconnect the headlight connector, circled below.





Locate the Dash Connector and disconnect it. Dash Connector circled below.

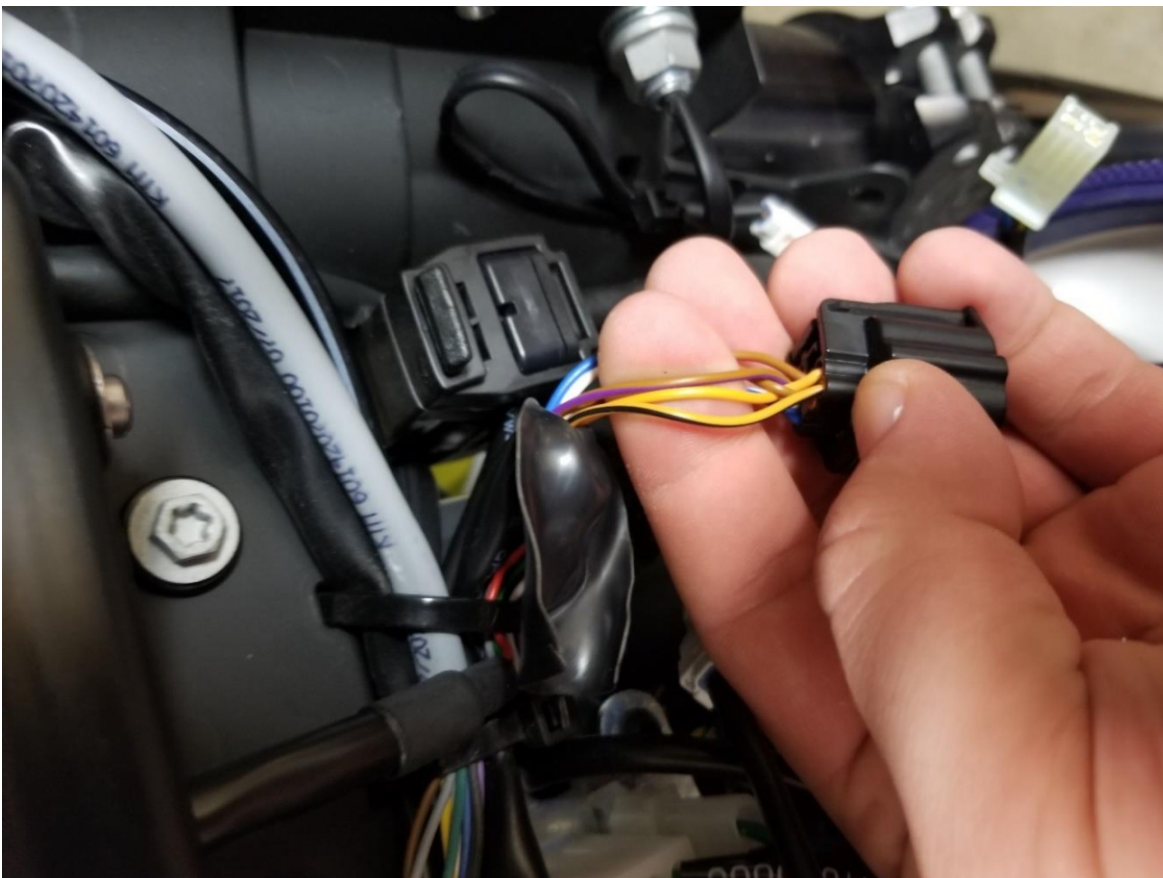




Shown below is the side of the connector we will splice the Red, Black, and White wires into from the GPX harness .



Peel back the sleeve on the connector and separate the Black/Orange, Orange, and Brown/Violet wires.



On the left side of the motorcycle locate the Crankshaft Position Sensor circled below. The Crankshaft Position Sensor is a 2-pole connector with a White/Yellow and Yellow/Blue wire. Specific location of this connector may vary by bike based on other aftermarket parts being installed.





The Crankshaft Position Sensor can be identified by tracing the connector from the top of the Crankcase (circled below) to the connector.



Note: the HealTech Universal wire harness may need some modification depending on motorcycle model. In this case the green wire from the HealTech harness must be run through the motorcycle to the Crankshaft Position Sensor while the Red, White, and Black wires from the HealTech harness need to be routed to the headlight assembly.

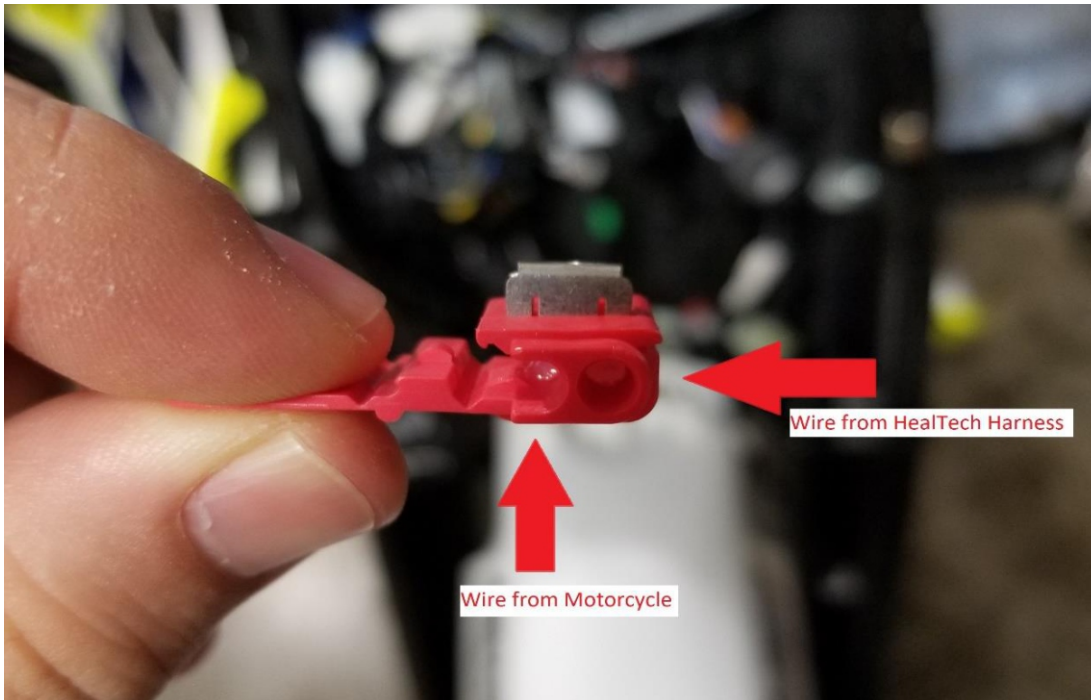
Connect the following wires from the GPX harness to the corresponding wires on the Dash Connector:

GPX Red -> Orange

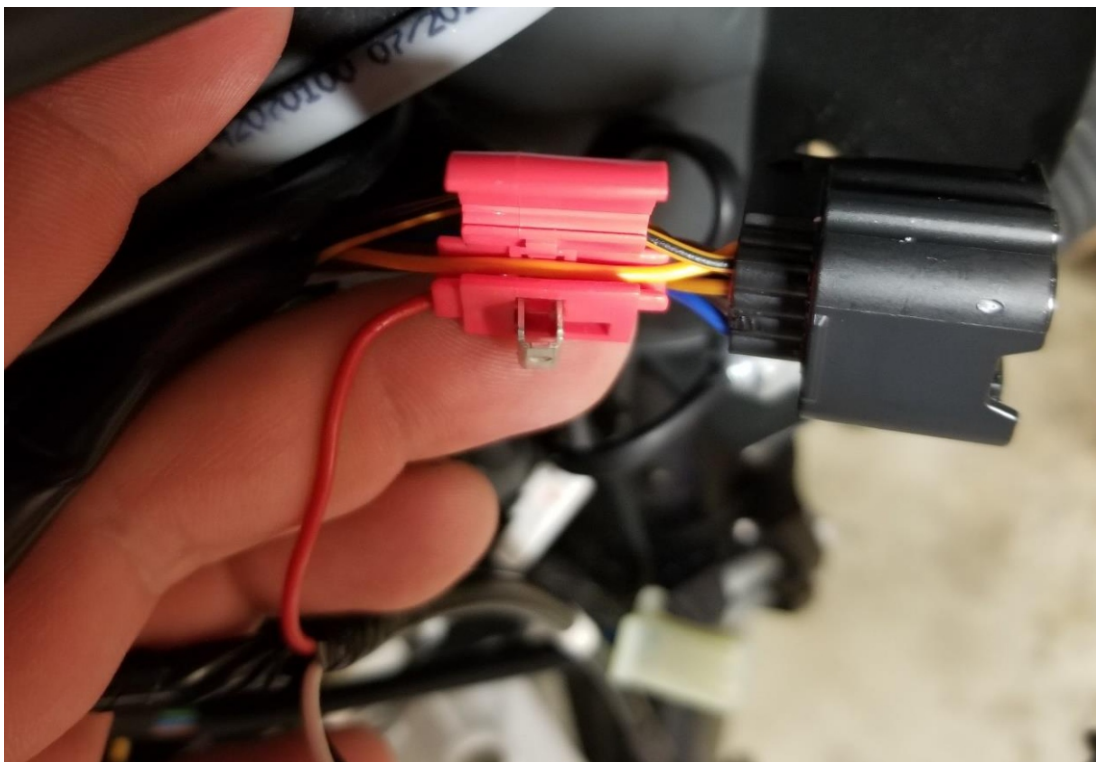
GPX Black -> Brown/Violet

GPX White -> Black/Orange

Using the connectors supplied in the kit place the wire from the harness into the hole on the right as shown in the picture below and place the cable from the connector in the slot on the left of the wire connector. Insert "Metal Joiner" and close the connector to splice wires. See picture of connector below for clarification.



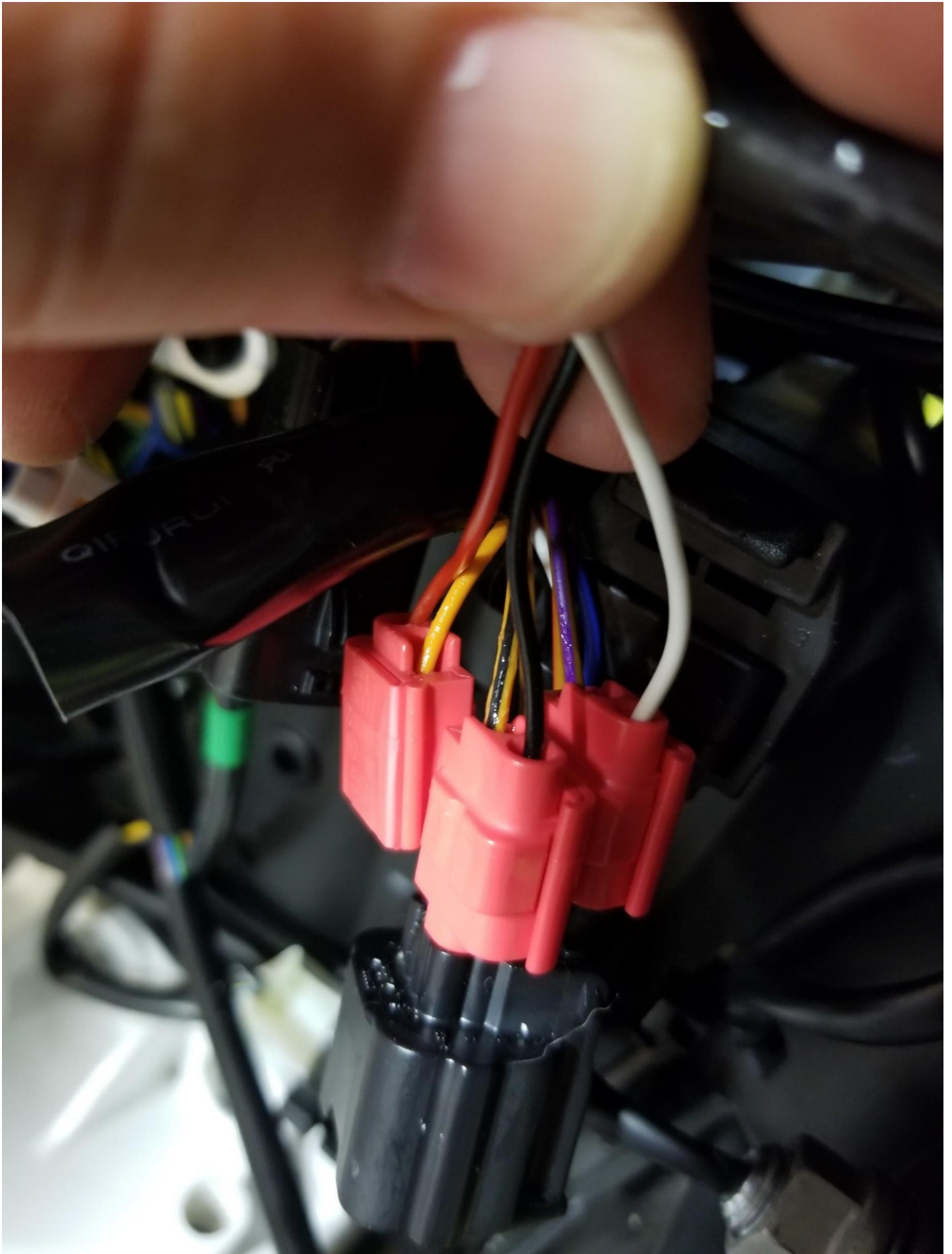
Below you can see how the connector should look prior to closing the connector.





After connecting all three wires from the Dash Connector plug, plug in the HealTech gear indicator to the harness and turn the motorcycle key to the "ON" position while in Neutral gear. The indicator should count down from 7 then blink L slowly. This indicates you have correctly connected the Power (Red), Ground (Black) and the Speed Sensor (White). See pictures below for correct connector appearance and Dash/Gear Indicator display.



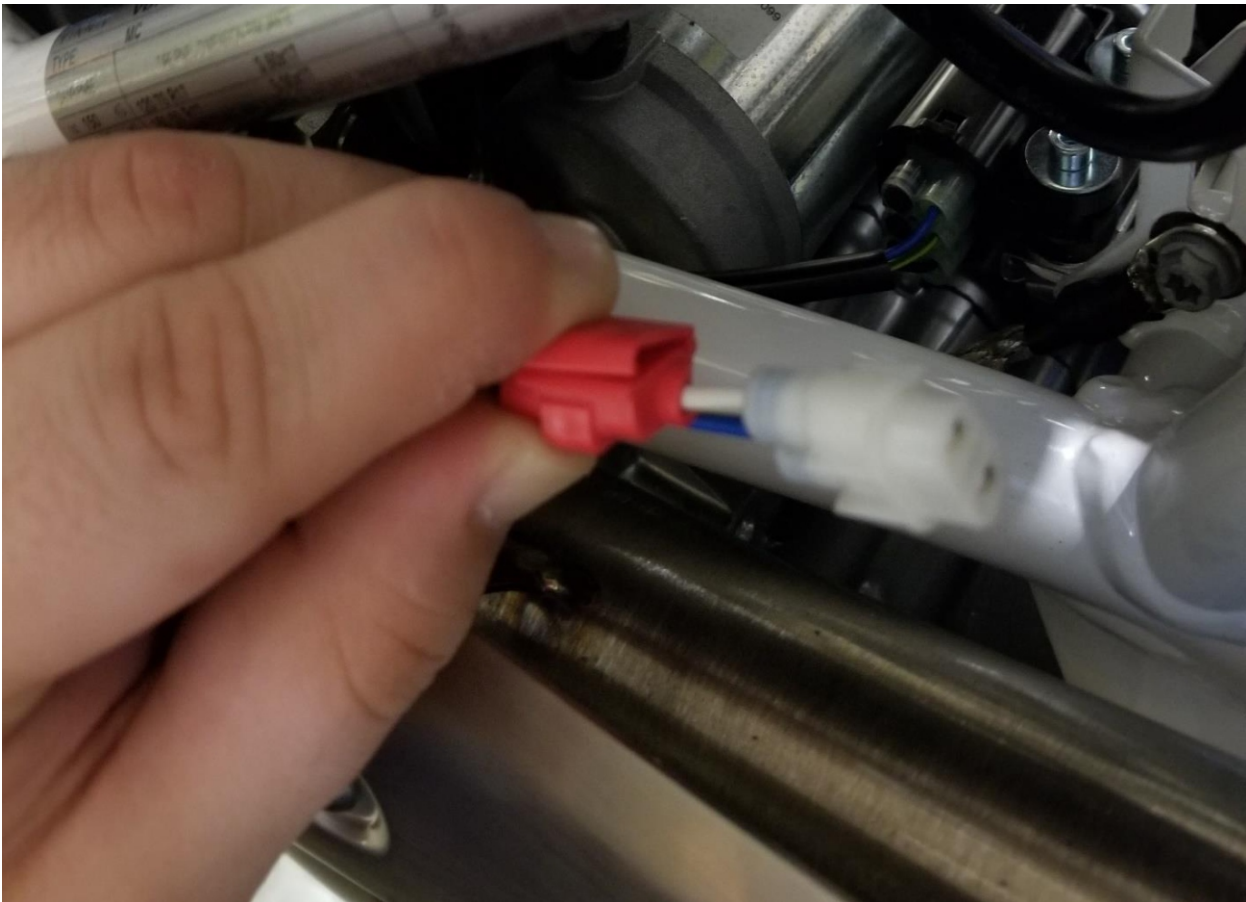
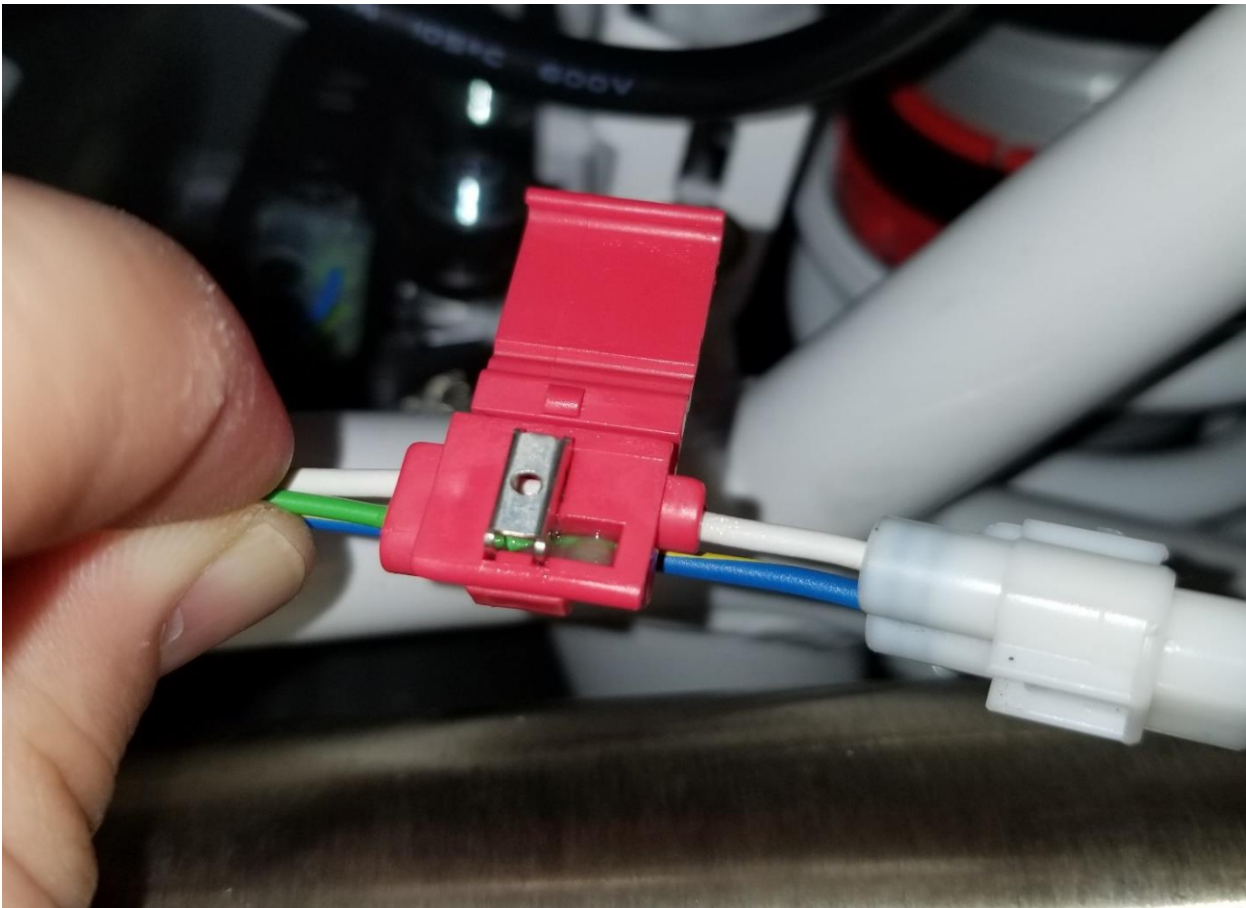




With the key in the "ON" position and in Neutral if you roll the motorcycle backward or forward or spin the wheel if on a stand. You will see the gear indicator change, a still shot can be seen below of the Gear Indicator appearance when the wheel is spinning.



Turn the key "OFF" before proceeding to connect the Green wire to the Crankshaft Position Sensor (White/Yellow wire).





Again, turn the key to the "ON" position when in Neutral gear, the indicator should again count down from 7 to L and flash. Start the motorcycle and the L should now flash faster. Mount your gear indicator in the desired location. Shown below the gear indicator is mounted to the left of the instrument cluster using the supplied sticky pads. Follow instructions in the GPX User Guide to teach the indicator the gearing on your motorcycle.

